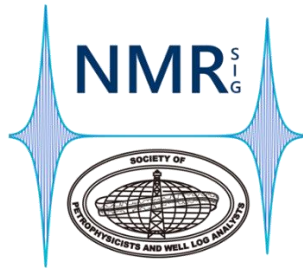


PRE-REGISTRATION BROCHURE



SPWLA 2026 NMR SIG Conference

10–11 September 2026

Hosted by Baker Hughes, Celle, Germany

In Person Only – Off the Record

The Executive Committee of the SPWLA NMR Special Interest Group (SIG) invites the NMR community to the SPWLA 2026 NMR SIG Conference, held 10–11 September 2026 at the Baker Hughes facility in Celle, Germany.

The meeting brings together professionals from operating companies, service companies, independent consulting, and academia—ranging from NMR specialists to colleagues with a broader interest in NMR—for two days of technical exchange focused on NMR science, measurement technology, and subsurface applications.

All sessions are off-the-record: no recording, no photos, no video, and no proceedings.

Information Disclaimer

Details in this brochure are subject to change as event planning continues. Prospective participants should refer to the [SPWLA NMR SIG](#) website for the latest updates and official information.

Conference Scope

- NMR petrophysics
- NMR logging
- NMR core analysis
- NMR data processing and corrections
- NMR sensor technology

Conference Schedule & Format

Main Conference: Thursday–Friday, 10–11 September 2026

Optional Pre-Conference Program sponsored by Baker Hughes (capacity-limited):

- Wednesday, 9 September 2026
 - Baker Hughes Test Rig visit (ca. 14:30–16:30)
 - On-site networking reception (ca. 16:30–18:00)
- Separate registration required for planning and capacity management.
- Access requirements for the Wednesday program (e.g., safety briefing) will be communicated once confirmed.

Keynote, Welcome & Conference Opening

Keynote Speaker:

[Matthias Appel](#) (Chief Scientist – Physics & Earth Sciences, Shell)

Host Welcome:

[Sven Krüger](#) (Senior Engineering & Technology Director, Baker Hughes)

Conference Opening:

[Radu Coman](#) (Conference Chair & SPWLA NMR SIG President Elect)

Invited Speakers and Provisional Titles

- [Ridvan Akkurt](#) - Who Said NMR was for Perm? My First NMR Logging Job
- [Christoph Arns](#) - NMR Response Interpretation Utilizing Digital Rock Physics
- [Bruce Balcom](#) - MR and MRI in Core Analysis with a Variable Field Superconducting Magnet
- [Bernhard Blümich](#) - Low-Field NMR: From the NMR-MOUSE to Benchtop NMR Spectroscopy
- [Martin Hürlimann](#) - Taming and Exploiting Spins in Inhomogeneous Fields: A Personal Journey Through NMR Logging
- [Philip Singer](#) - Towards Hydrogen Geostorage in Partially Depleted Gas Shales
- [Yi-Qiao Song](#) - Characterization of Basalt Formations
- [Boqin Sun](#) - TBA
- [Harry Xie](#) - T_2 Distribution and the Associated Petrophysical Parameters: Reality or Misconception in NMR Data Interpretation

Technical Program

The technical program will include approximately 12–18 contributed presentations in addition to the invited speaker talks. All accepted abstracts will be presented as **oral presentations**.

Conference Venue

- Baker Hughes – Celle Technology Center
- **Address:** [Baker-Hughes-Str. 1, 29221 Celle, Germany](#)



Visitor Access Information for the Baker Hughes Facility

To comply with Baker Hughes' standard visitor procedures, all external participants are required to complete a routine access check before entering the Baker Hughes Celle Technology Center. Please send the following information **by email** to radu.coman@bakerhughes.com with the subject line **"Access Check"**:

- Family Name (as in passport):
- Given Name(s):
- Nationality:
- Employer (or "private"):

Only the minimum information needed for visitor registration is collected, and it is used solely for access coordination with Baker Hughes Security.

After your details have been entered into the visitor system and the access check has been completed, you will receive an email with a link to complete the mandatory online safety briefing. This safety briefing must be completed before arrival at the facility.

You will also be assigned to a visitor group, which provides the master information for the visit time. In the system-generated email, the date shown may be a placeholder ("dummy date"); this can be ignored, as the actual timing of the visit will be communicated directly by the conference organizers.

Once you have completed the safety briefing, you may proceed with travel arrangements and conference registration.

Governance

Conference Chair: [Radu Coman](#) (Baker Hughes)

Program Committee (alphabetical):

- [Nate Bachman](#) (SLB)
- [Ron Balliet](#) (Halliburton)
- [Ron Bonnie](#) (SPWLA)
- [Radu Coman](#) (Baker Hughes)
- [Daan de Kort](#) (Shell)
- [Kris Farmer](#) (Core Laboratories)
- [Saleh Komies](#) (Saudi Aramco)
- [Amr Mohamed Serry](#) (ADNOC Offshore)
- [Hege Christin Widerøe](#) (Equinor)

Abstract reviews by the members of the Program Committee and the members of the SPWLA NMR SIG Executive Committee.

Agenda Overview

A detailed agenda will be released by late June / early July 2026.

Transportation from Hannover Airport to Celle

Hannover Airport (HAJ) is the closest major airport, located approximately 38–40 km from Celle.

Taxi / Uber

Taxis can also be booked via the Uber app (UberX).

We recommend downloading and configuring the app in advance.

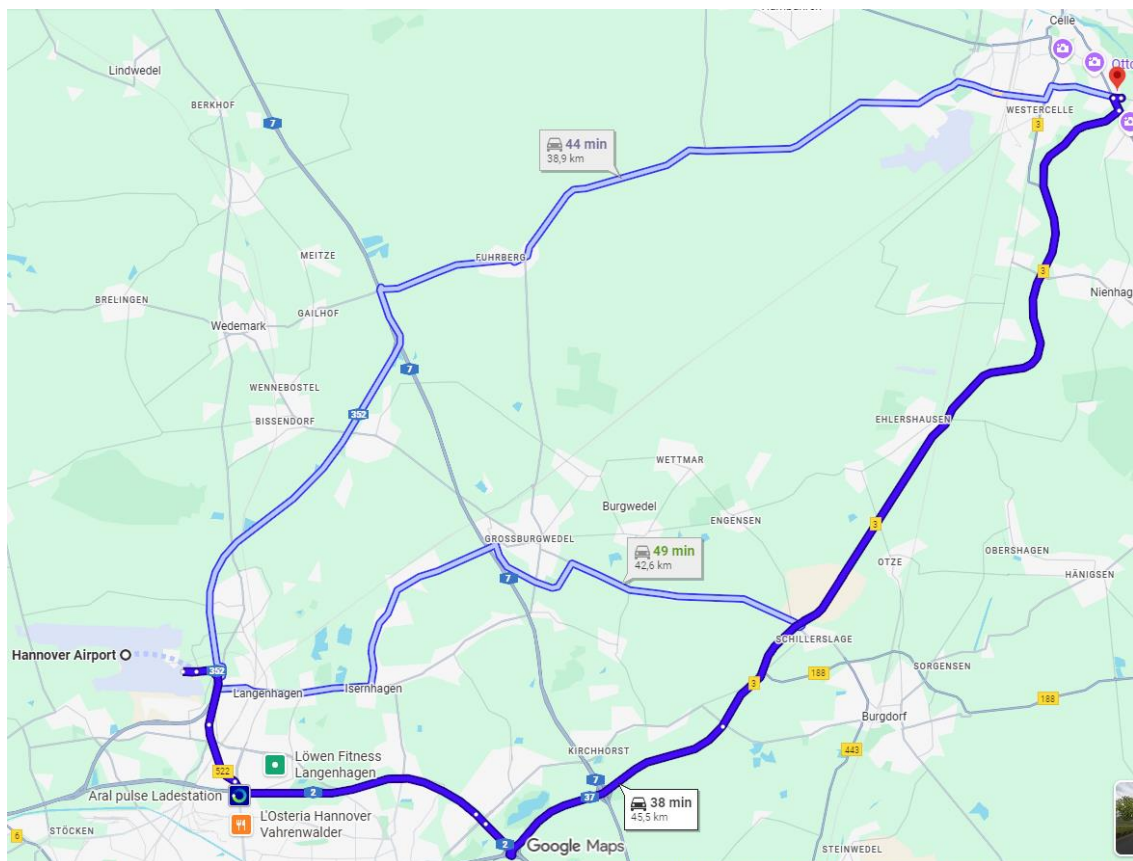
Travel time: ~38–45 minutes

Typical fare: €100–€130

Rental Cars

Available directly at Hannover Airport.

Attendees considering rental cars should verify hotel parking availability and costs beforehand.



*Map data © Google Maps, access date January 2026.

Our Suggestions for Accommodation

Hampton by Hilton Celle

77er Str. 1
29221 Celle
Tel. +49 5141 90900
<https://www.hilton.com/en/hotels/hajeehx-hampton-celle/>

IntercityHotel Celle

Nordwall 20
29221 Celle
Tel. +49 5141 2000
Email: celle@intercityhotel.com
<https://hrewards.com/de/intercityhotel-celle>

Hotel Caroline Mathilde

Alter Bremer Weg 37
29223 Celle
Tel. +49 5141 980780
<https://caroline-mathilde.de/>
Booking via: Wallbaum Hotel Marketing
Email: wallbaum@Besserbuchen.com
Tel. +49 5141 709050

Althoff Hotel Fürstenhof

Hannoversche Str. 55 -56
29221 Celle
Tel. +49 5141 201 0
Email: reservation@fuerstenhof-celle.com
<https://www.althoffcollection.com/de/althoff-hotel-fuerstenhof-celle>

Please note:

The SPWLA NMR SIG does **not** have agreements, room blocks, or negotiated rates with any hotels. Participants are responsible for making their own reservations.

As September can be a busy period in Celle, we recommend booking accommodation early to ensure availability. If booking far in advance feels uncertain, many hotels offer **flexible reservations with free cancellation**, allowing attendees to secure a room now and adjust plans later if needed.

Transportation from Hotels to Baker Hughes Facility

Conference Bus: A dedicated conference bus will provide transportation between the recommended hotels and the Baker Hughes Technology Center each day. Morning pickup and evening return times will be announced closer to the conference date.

Taxi / UberX: Taxis (including UberX) can serve as a fallback if the conference bus is missed.

Public buses are available, but this option is not recommended for the morning transfer unless you are familiar with local routes. Tickets on the bus can be purchased cash-only. Schedule and price information: <https://cebus-celle.de/en/>

On-Site Logistics

- Guest Wi-Fi available
- Catering: coffee breaks, lunches

Off the Record Policy

No personal photography, no video recording, and no audio capture by attendees.

A small number of official, SIG-authorized photos may be taken by designated organizers for documentation purposes (for example, a presenter at the title slide or the moment a speaker receives the speaker gift). These photographs will not include technical slide content.

Photo Consent

By registering for the conference, participants acknowledge that a small number of official event photos may be taken as described above. These may include non-technical group photos (for example, at the welcome, break times, or closing) that may be used for SPWLA NMR SIG LinkedIn posts. Attendees who prefer not to appear in any official photos are kindly asked to inform the Conference Chair in advance.

Visa Information for International Participants

If you reside outside the Schengen area, please verify early whether you require a Schengen visa to enter Germany.

For participants submitting an abstract:

If your abstract is selected for presentation *and* you require a visa, the host organization can provide a Letter of Invitation (LOI) to support your visa application.

LOIs can only be issued to accepted presenters. If you anticipate needing a visa, please plan accordingly to ensure sufficient processing time at your local consulate.

Registration

Registration is planned to open in **early June 2026** (via the SPWLA event webpage) and will close on **21 August 2026**.

Conference registration must be done only after the mandatory Baker Hughes online safety briefing has been successfully completed. Please refer to the section “Visitor Access Information for the Baker Hughes Facility” above for details.

Fees:

- SPWLA members: ~200 EUR (USD equivalent to be applied at registration)
- Regular participants: ~250 EUR (USD equivalent to be applied at registration)
- Students: ~100 EUR (USD equivalent to be applied at registration)

Registration will be processed in USD via the SPWLA registration system. Final USD amounts will be communicated when registration opens, based on the prevailing exchange rate.

The optional pre-conference program on Wednesday, 9 September 2026 is open to all attendees; however, advance registration is required due to limited capacity and planning need.

Refunds and Cancellations:

Disclaimer: The refund and cancellation policy included in this pre-registration brochure is a draft. The official and final policy will be published on the SPWLA registration page when registration opens.

If you cannot attend the 2026 NMR SIG Conference, you may request a refund or transfer your registration to another attendee.

Cancellations (Non-Emergency):

- Before 10 August: Full refund minus a 10% processing fee.
- Between 11 August and 31 August: A 50% cancellation fee applies.
- After 1 September: No refund will be issued.

Transfers can be requested until 31 August. A \$25 transfer fee applies when transferring a registration to another attendee.

All cancellations or transfer requests must be submitted in writing via email to the SPWLA Business Office and must include your full name and the conference details. Telephone requests cannot be accepted. Written confirmation will be provided within two business days.

Force Majeure: In the event of circumstances beyond the control of the organizers (e.g., severe weather, natural disasters, transportation shutdowns, or other force-majeure situations), SPWLA NMR SIG reserves the right to cancel, postpone, or modify the conference program. Refund decisions in such cases will follow SPWLA’s standard refund policy, including the 10% processing fee.

In exceptional cases not explicitly covered above, the final decision on refunds rests with the Chair of the 2026 NMR SIG Conference.

Conference Sponsors



A limited number of standardized sponsorship opportunities are available. The Hospitality Sponsor option supports conference catering or equivalent logistics and is offered on a first-committed basis. The Industry Spotlight Sponsor, which is capped at one, supports the conference program without marketing rights and includes a single, clearly labeled 20-minute technical, non-marketing presentation.

All sponsorship packages include mention in the conference agenda and SPWLA NMR SIG communications, as well as one registration waiver.

Organizations interested in supporting the conference may contact the Conference Chair at **NMR@spwla.org**.

Acknowledgements

We gratefully acknowledge the support of the SPWLA, the NMR SIG Executive Board, and the Local Organizing Committee.

Contact

Most information about the conference is available on the SPWLA NMR SIG webpage and LinkedIn channels. If you cannot find what you need or if anything is unclear, or if you have questions about sponsorship, please contact us at **NMR@spwla.org**.

- For up-to-date information: visit the [SPWLA NMR SIG webpage](#)
- For announcements and updates: follow the [SPWLA NMR SIG LinkedIn page](#)
- For networking with participants: join the [LinkedIn event](#)